

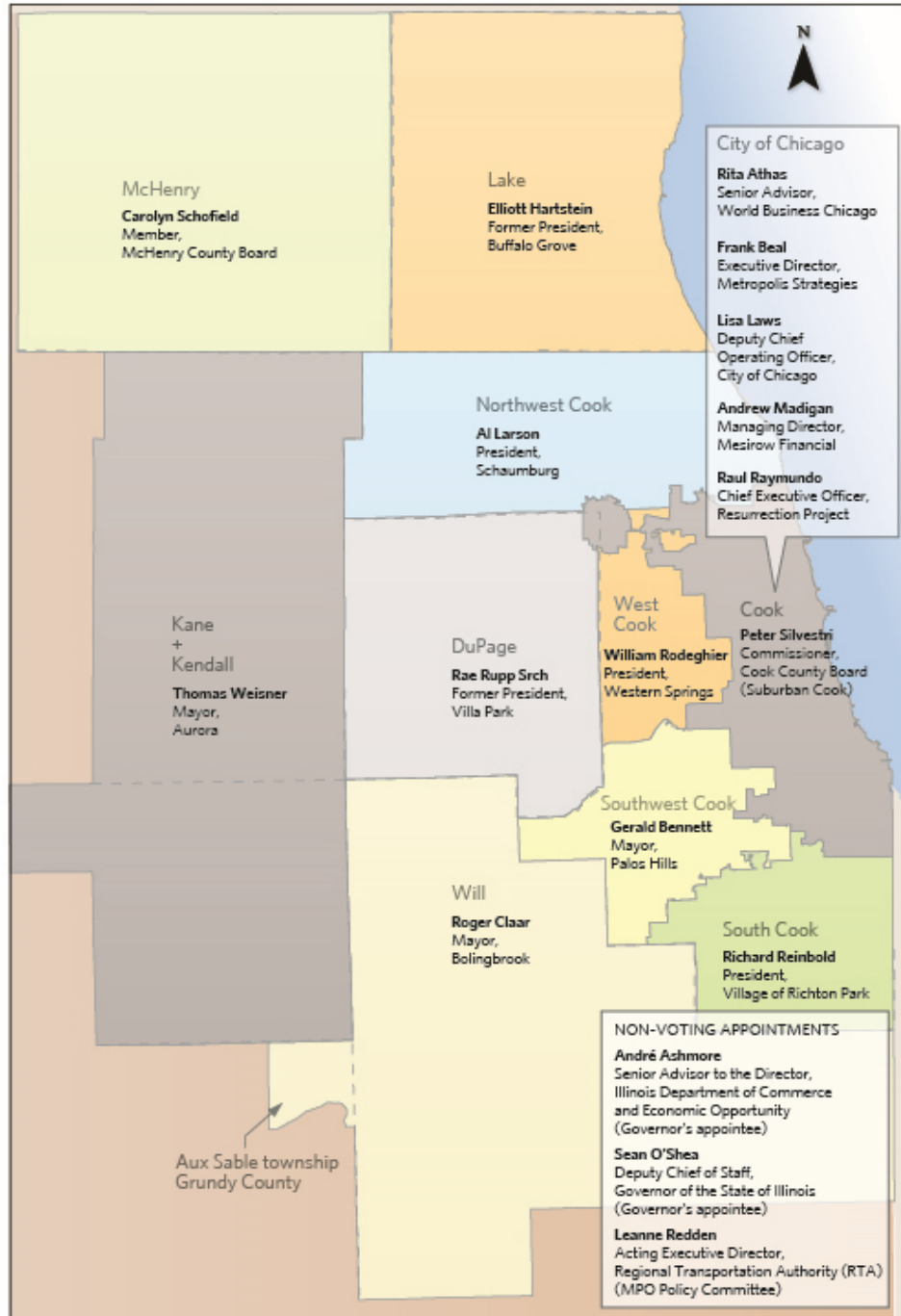
# CMAP Resources for Green Infrastructure Planning

**Resilient Chicago**

July 8, 2015

**Kate Evasic**  
Associate Planner

# CMAP Board Composition



## Chicago Metropolitan Agency for Planning

- Formed by state law in 2005 to integrate planning for transportation and land use
  - Works across jurisdictions
- 7 counties
- 284 municipalities
- Over 1,200 units of local government

# GO TO 2040

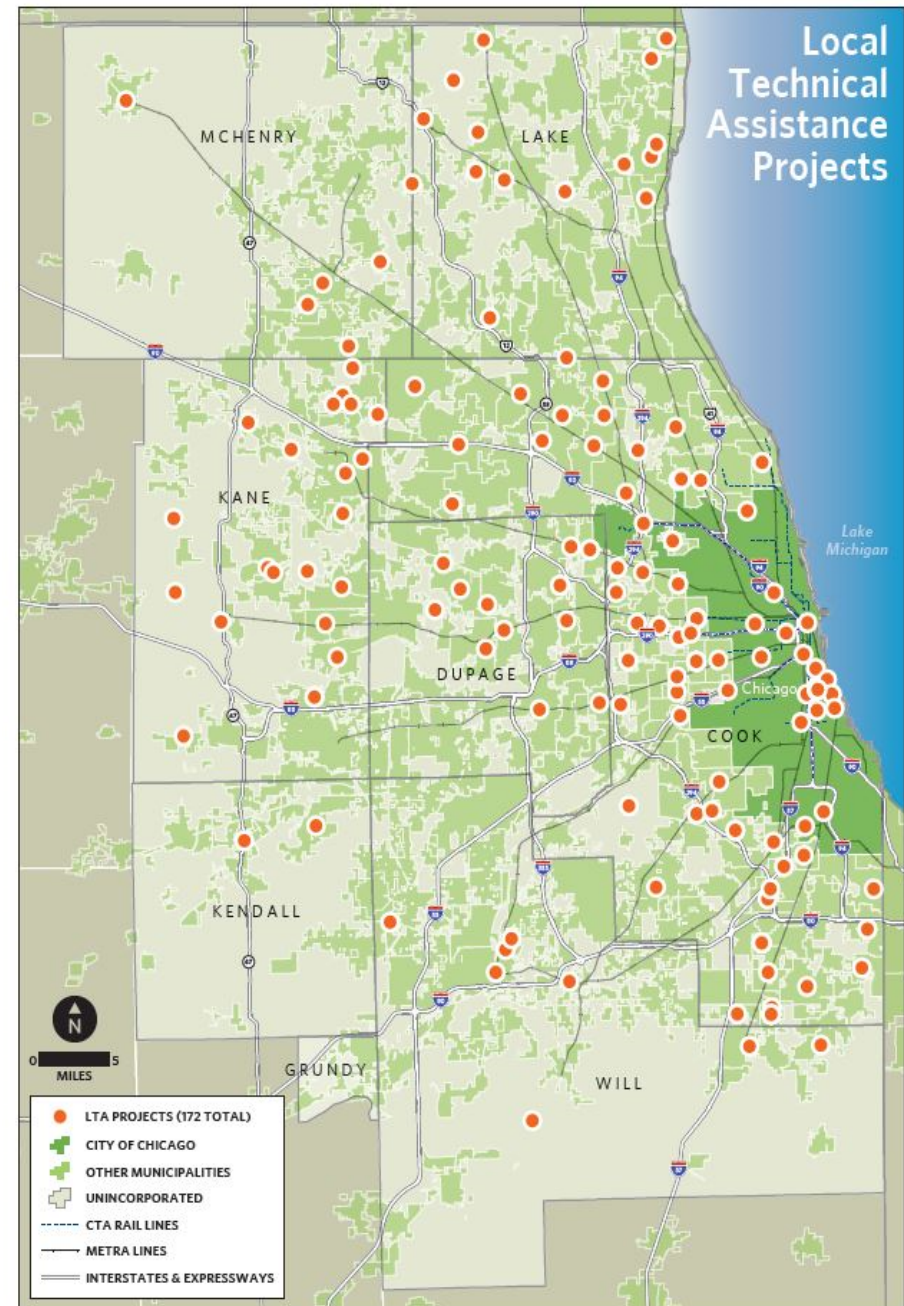
## Stormwater-Related Recommendations

- Integrate land use policies and site planning with water resources
- Reduce runoff volume
- Use site-scale green infrastructure to manage stormwater
- Develop sustainable sources of financing



# Local Technical Assistance Program

- Implements GO TO 2040 by providing planning assistance to local communities
- Initially funded by HUD, now combination of sources
- Initiated in 2011; 100 plans completed and 50 underway
- New projects selected annually



Source: Chicago Metropolitan Agency for Planning, 2014.

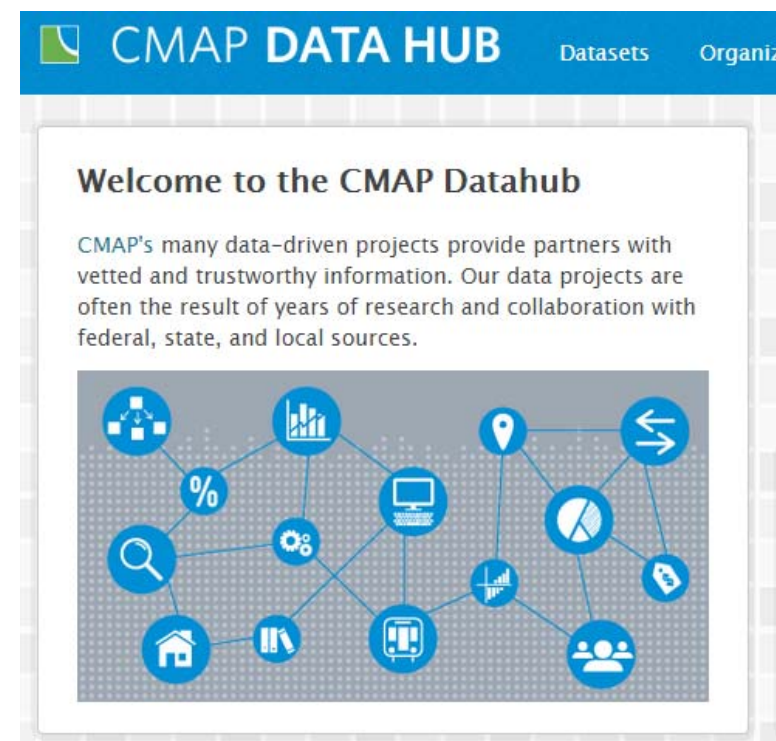
# Need to Address Localized Flooding



# Stormwater Management Opportunity Planning

## Overview

- Funded through the MacArthur Foundation and Cook County CDBG-DR
- Goal to integrate better stormwater management decisions into:
  - Local planning
  - Municipal operations and budgeting decisions
  - Data and information sharing
  - Transportation planning and programing

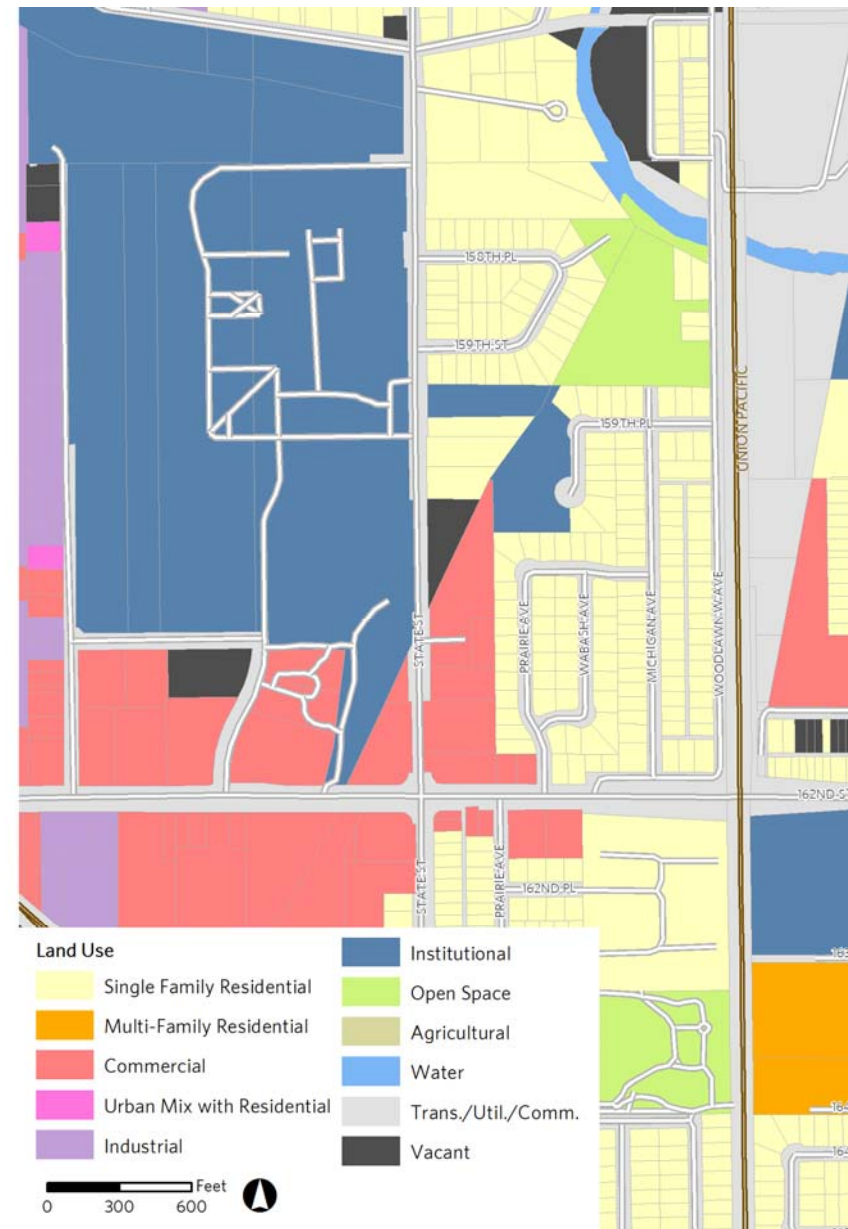


<https://datahub.cmap.illinois.gov/>

# Stormwater Management Opportunity Planning

## Overview

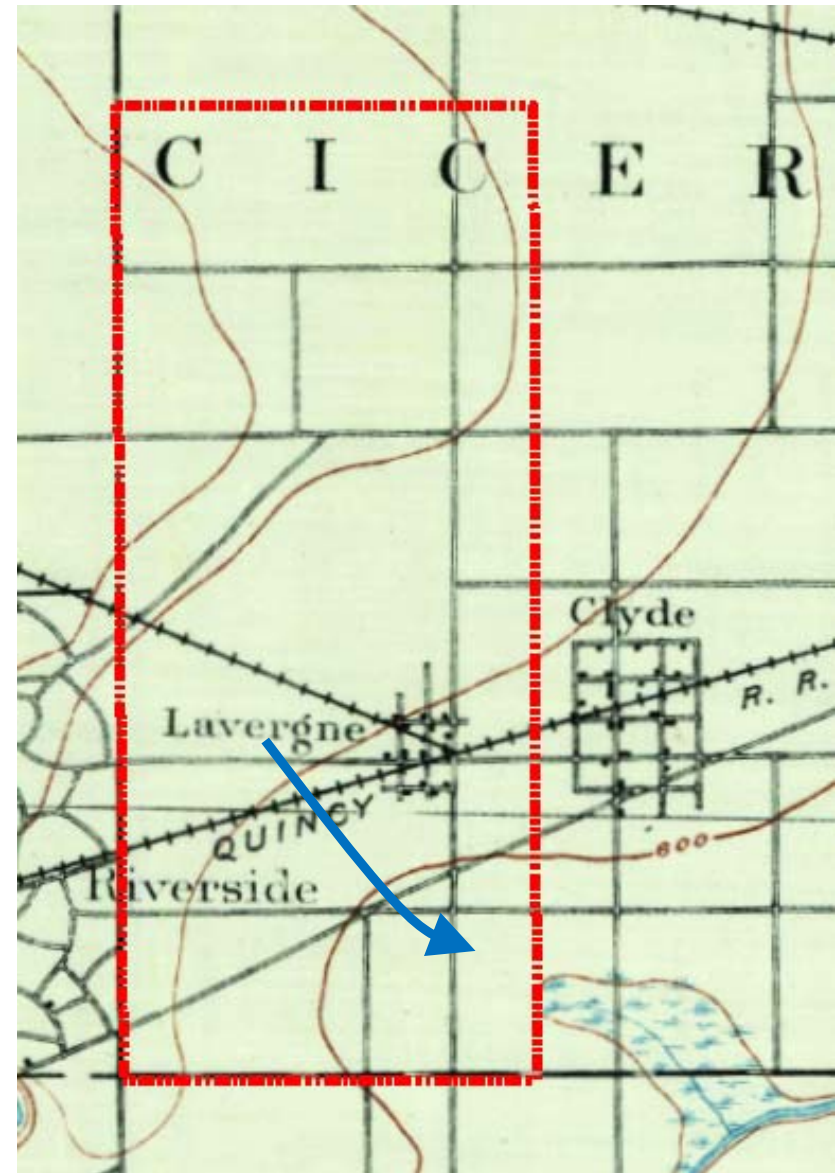
- Incorporate within comprehensive plans and other local plans
- Align with land use and transportation planning by focusing on above-ground solutions



# Stormwater Management Opportunity Planning

## Approach

1. Data Collection
  - Historic conditions
  - Topography
  - Impervious cover
  - Land use
  - Repetitive flood claims and local flood data

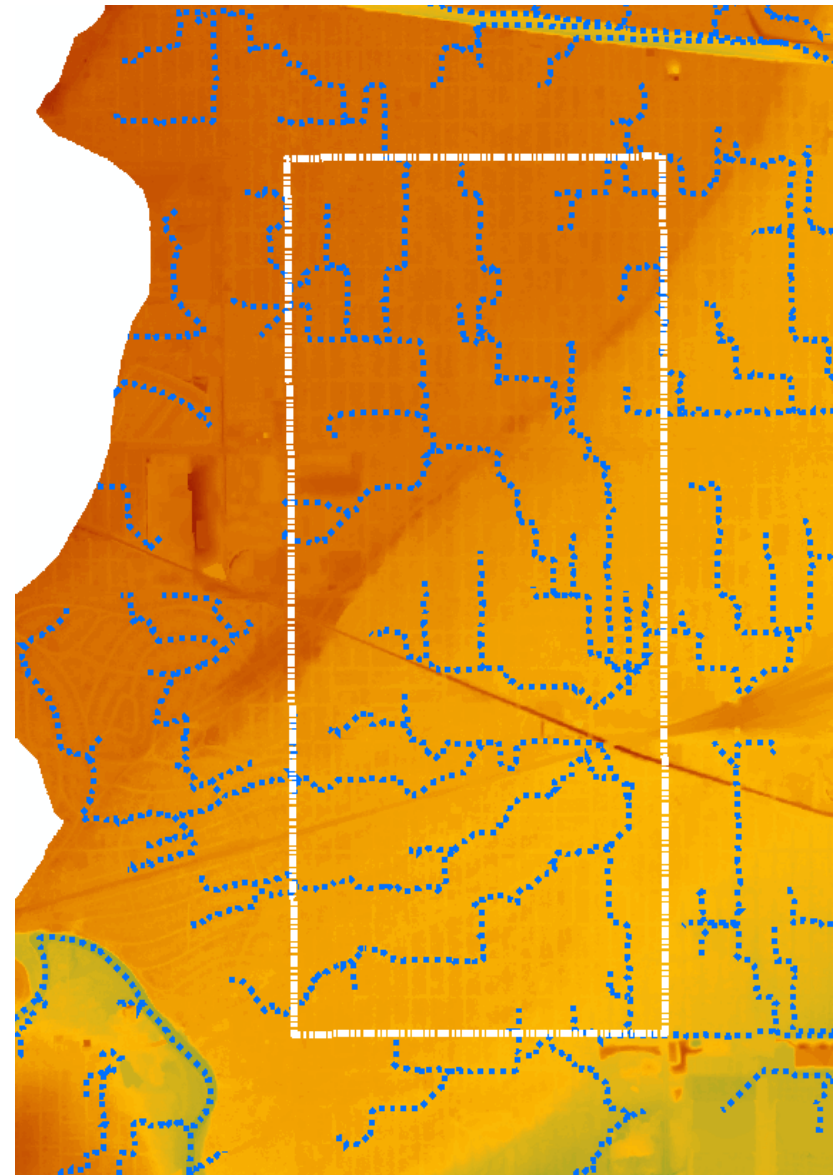




# Stormwater Management Opportunity Planning

## Approach

2. Data Analysis
  - Overland flow accumulation modeling using Arc Hydro tools
  - Catchment area delineation

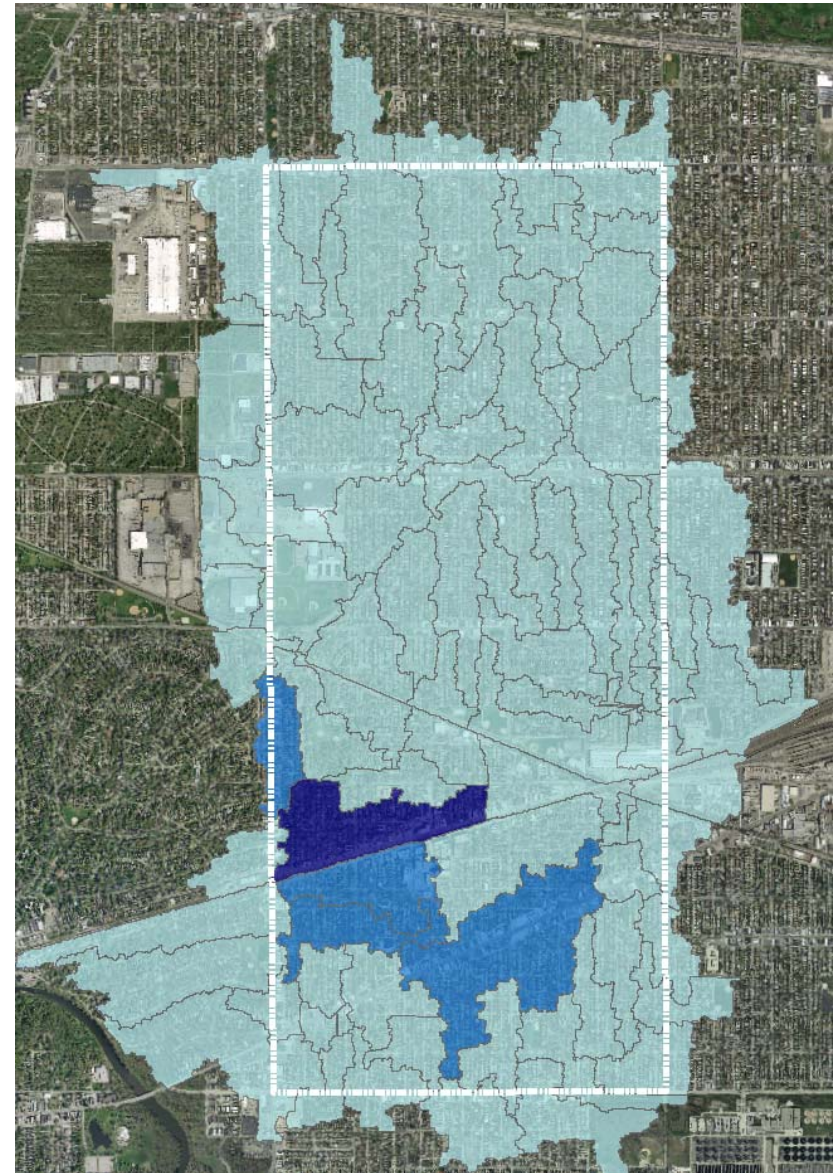


# Stormwater Management Opportunity Planning

## Approach

### 3. Evaluation

- Overlay analysis
- Prioritize catchments based on challenges and opportunities



# Stormwater Management Opportunity Planning

## Approach

4. Public Engagement
  - Identify or confirm problem areas
  - Educate residents and property owners
  - Garner public support for GI investment



# Stormwater Management Opportunity Planning

## Potential Recommendations

- Policies and Ordinances
- Engineering and Capital Improvements
- Maintenance and Monitoring
- Financing
- Education

# LTA Project Examples

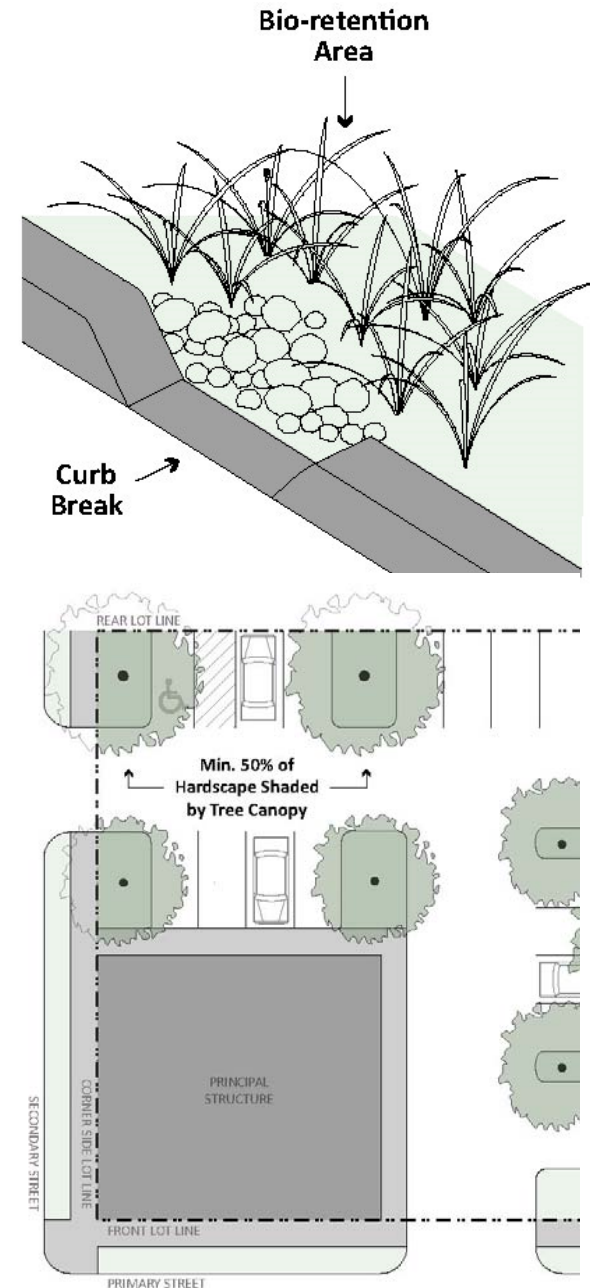
Examples of current projects incorporating stormwater management approach

Plan Type	Municipality	Potential Outcome
Comprehensive Plan	South Holland	Identify potential GI interventions based on land use
Transportation Plan	Crystal Lake	Incorporate GI into street design standards
Capital Improvement Plan	Blue Island	Build GI into road reconstruction projects Prioritize past plan recommendations

# Park Forest Unified Development Ordinance

## Landscape Requirements

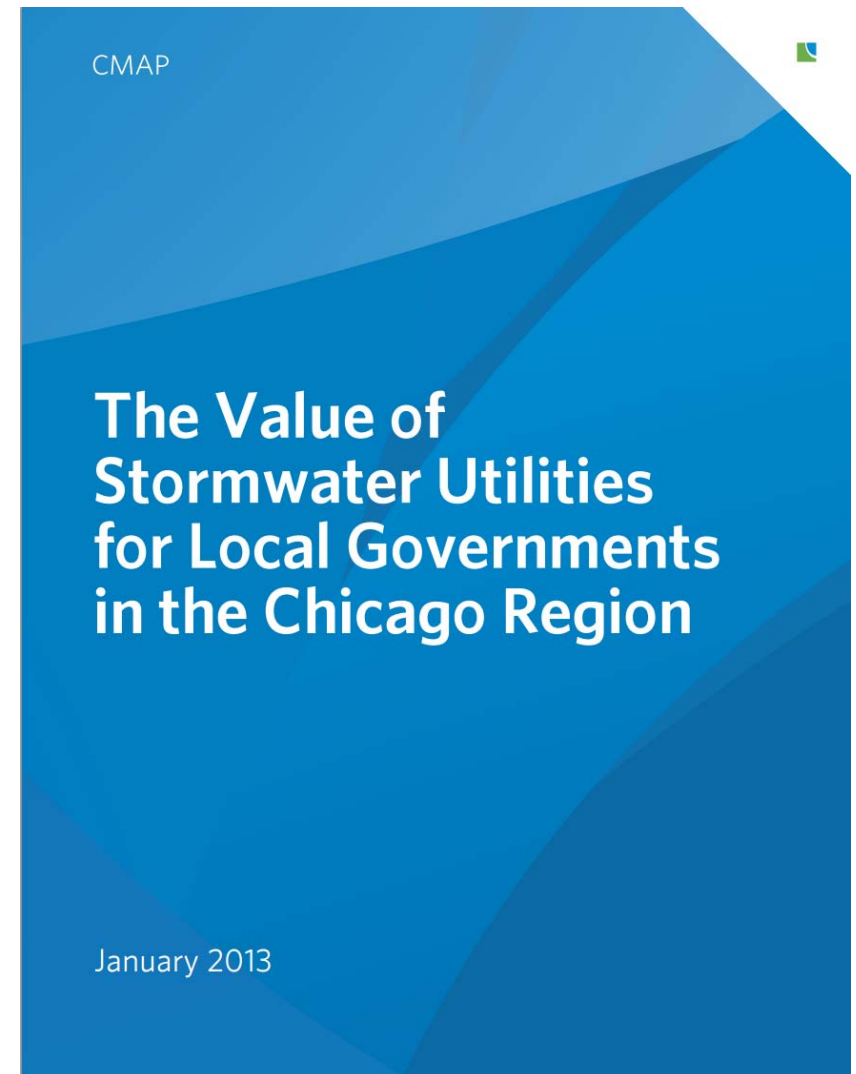
- Permits **different configurations** of landscape islands and other required landscape areas to meet stormwater management objectives
- Requires all landscaping be designed to **encourage stormwater infiltration**
- Requires that landscape areas have a **sufficient minimum width** to promote tree health and reduce impervious coverage
- Includes **maximum impervious coverage ratios** to facilitate stormwater infiltration
- 50% total plant material must consist of **native and drought-resistant plants**



# Other Resources

## Stormwater Utilities report

- Legal authority
- Program details
- Illinois case studies
  - Rolling Meadows
  - Highland Park
  - Downers Grove
- Implementation
- Addressing Concerns



# Thank you!

**Kate Evasic**

[kevasic@cmap.illinois.gov](mailto:kevasic@cmap.illinois.gov)

(312) 386-8782

CMAP website: [www.cmap.illinois.gov](http://www.cmap.illinois.gov)

GO TO 2040: [www.cmap.illinois.gov/2040](http://www.cmap.illinois.gov/2040)

Local Technical Assistance Program: [www.cmap.illinois.gov/Ita](http://www.cmap.illinois.gov/Ita)



Chicago Metropolitan  
Agency for Planning