

Aaron Koch Resilient Chicago

July 8, 2015



**CITY
OF
CHICAGO**



**DEPARTMENT
OF WATER
MANAGEMENT**



**DEPUTY
COMMISSIONER
FOR SUSTAINABILITY**





Credit: Lloyd DeGrane

Chicago Department of Water Management

12
Pumping
Stations

4,400
Miles of
Sewers

476 Million
Gallons Per Day
Average Use In
City of Chicago

2
Water
Purification
Plants

2.1 Billion
Gallons of Water
Purification Plant
Capacity

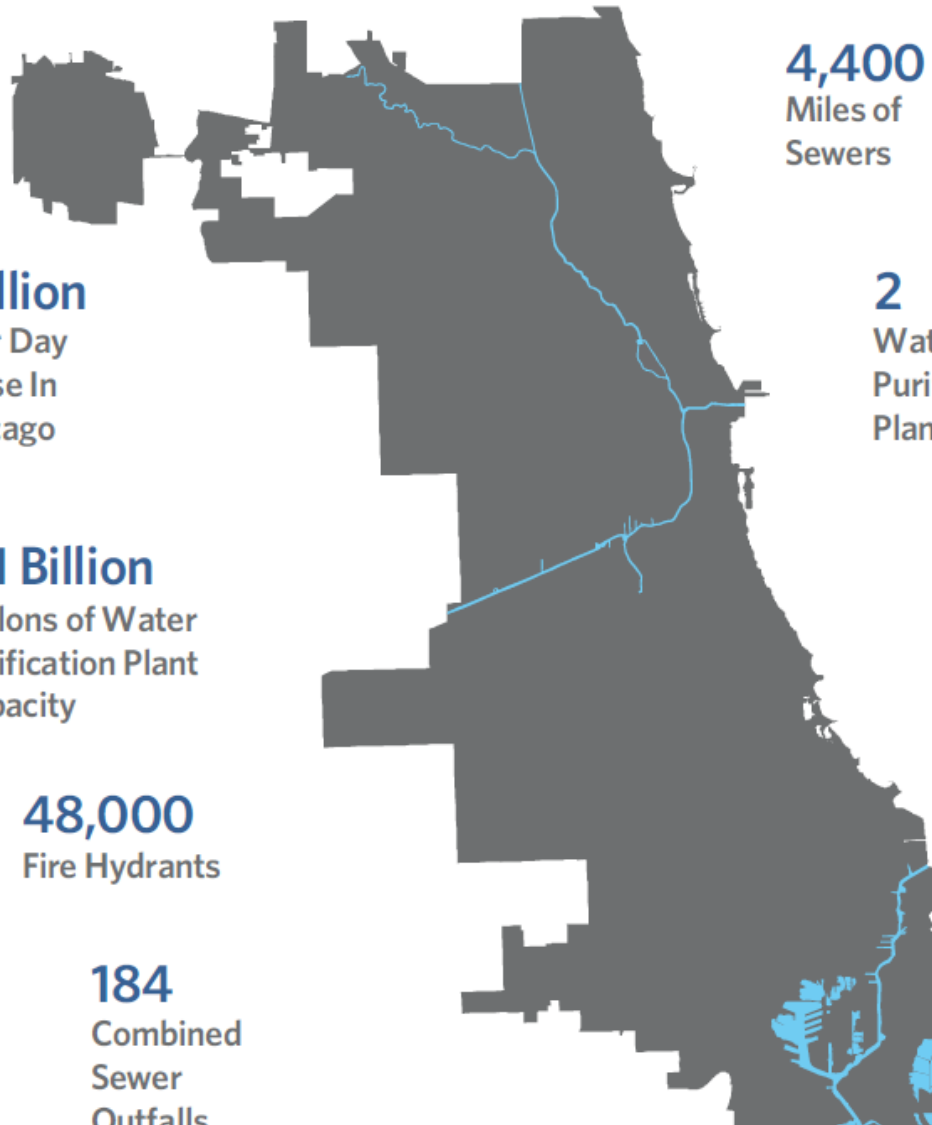
4,300
Miles of
Water Mains

48,000
Fire Hydrants

2,000
Employees

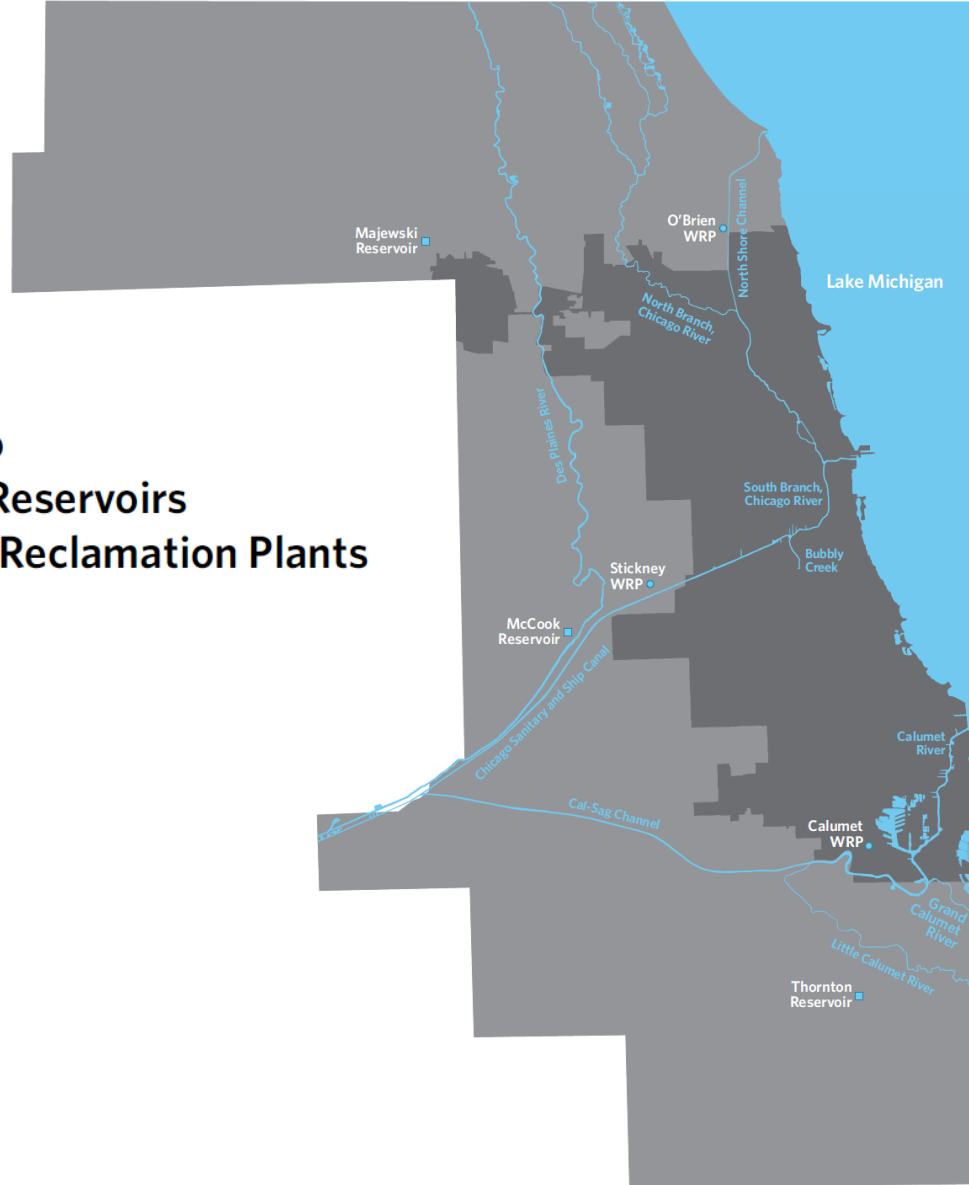
184
Combined
Sewer
Outfalls

250,000
Catch Basins



Chicago Area Waterway System

- Cook County
- City of Chicago
- MWRD TARP Reservoirs
- MWRD Water Reclamation Plants

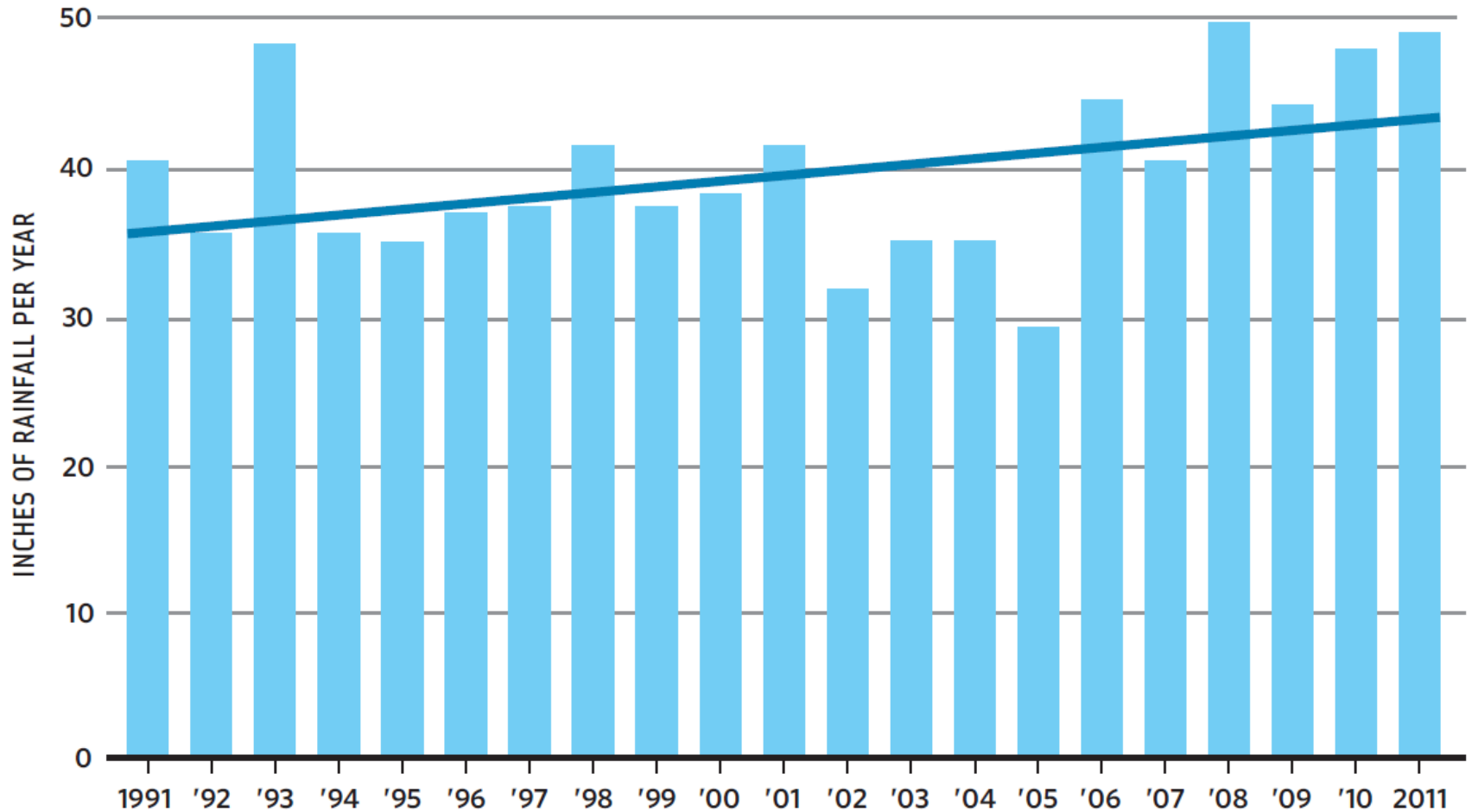




Climate change in Chicago

Average Annual Rainfall in Chicago: 1991-2011

Illinois State Water Survey Cook County Precipitation Network Station 10



BUILDING A NEW CHICAGO



Modernizing Neighborhoods | Creating Jobs

For additional information, please visit [www.chicago.gov](#)







2015 SUSTAINABLE CHICAGO

ACTION AGENDA



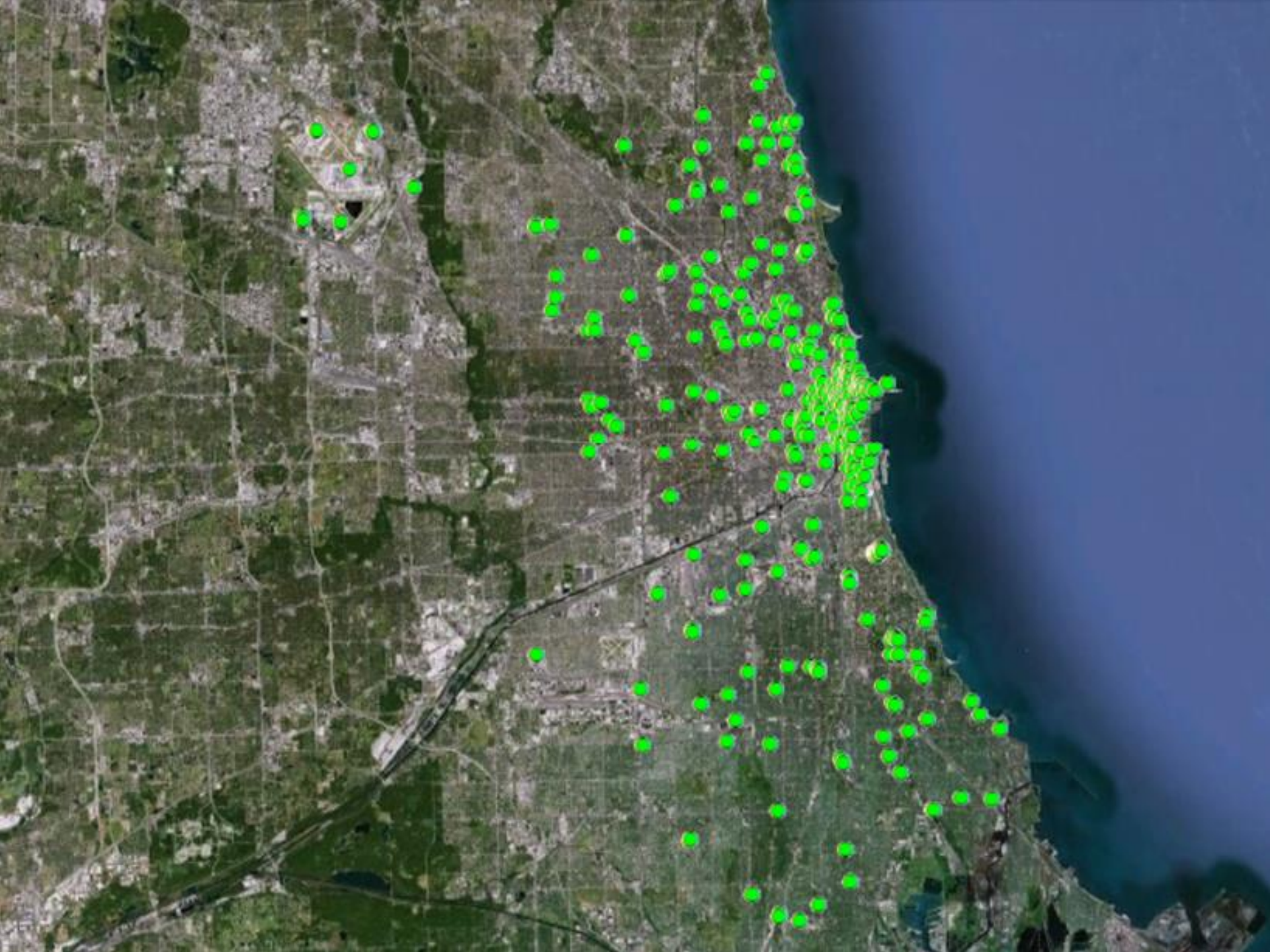
CITY OF CHICAGO GREEN STORMWATER INFRASTRUCTURE STRATEGY



MAYOR RAHM EMANUEL













Sustainable Urban Infrastructure

Chicago Department of Transportation



N GLENWOOD AV

Policies and
Guidelines

Volume 1











CITY LIGHT

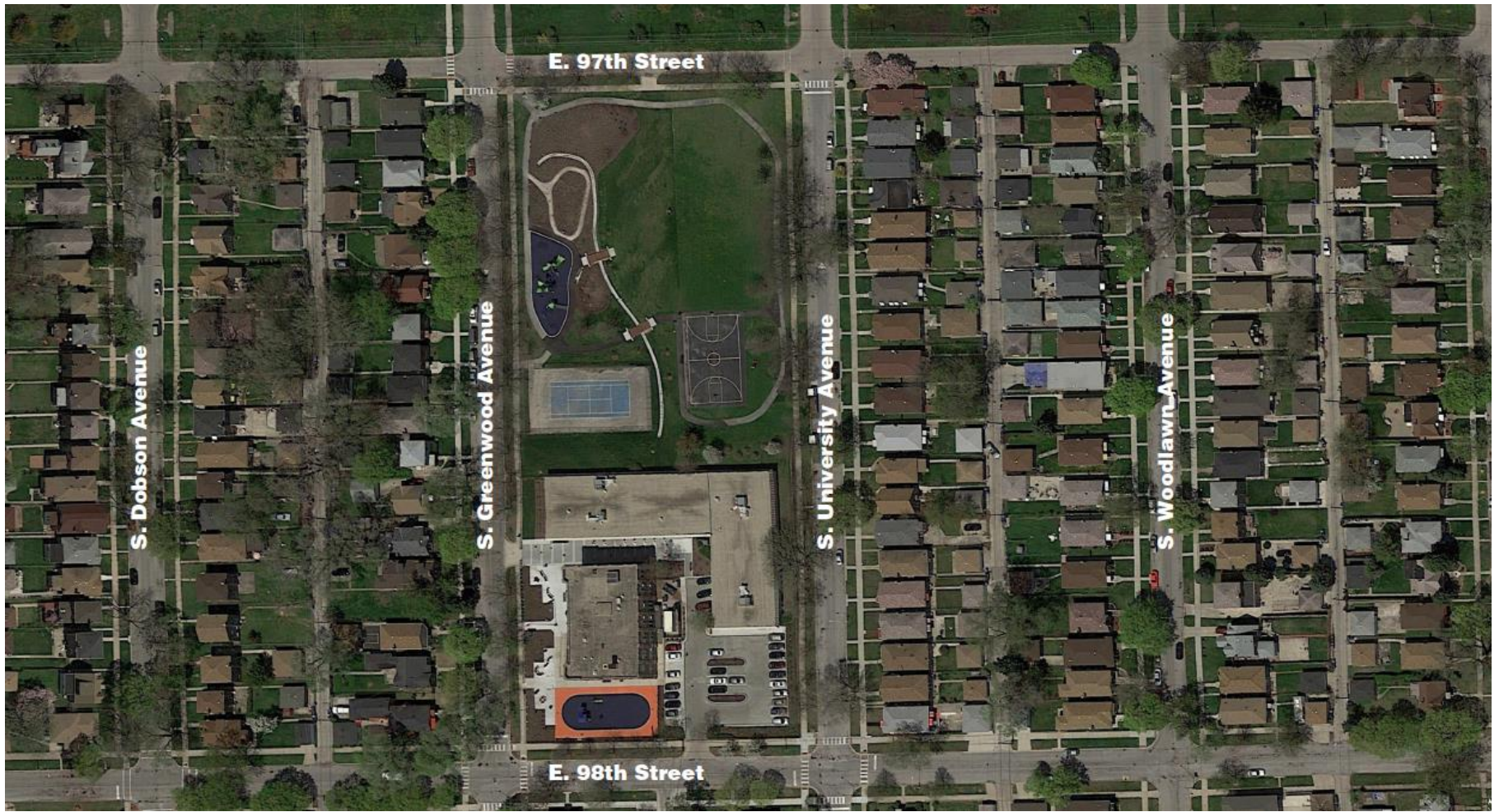




Schmid Elementary - Before

Space to Grow Schoolyards

**Collaboration between CPS, MWRD, & DWM in partnership with
Openlands and Healthy Schools Campaign**



Schmid Elementary – After

Space to Grow Schoolyards

Collaboration between CPS, MWRD, & DWM in partnership with Openlands and Healthy Schools Campaign



Schmid Elementary - After

Space to Grow Schoolyards

Collaboration between CPS, MWRD, & DWM in partnership with Openlands and Healthy Schools Campaign



Schmid Elementary - After

Space to Grow Schoolyards

Collaboration between CPS, MWRD, & DWM in partnership with Openlands and Healthy Schools Campaign



Grissom Elementary - Before

Space to Grow Schoolyards

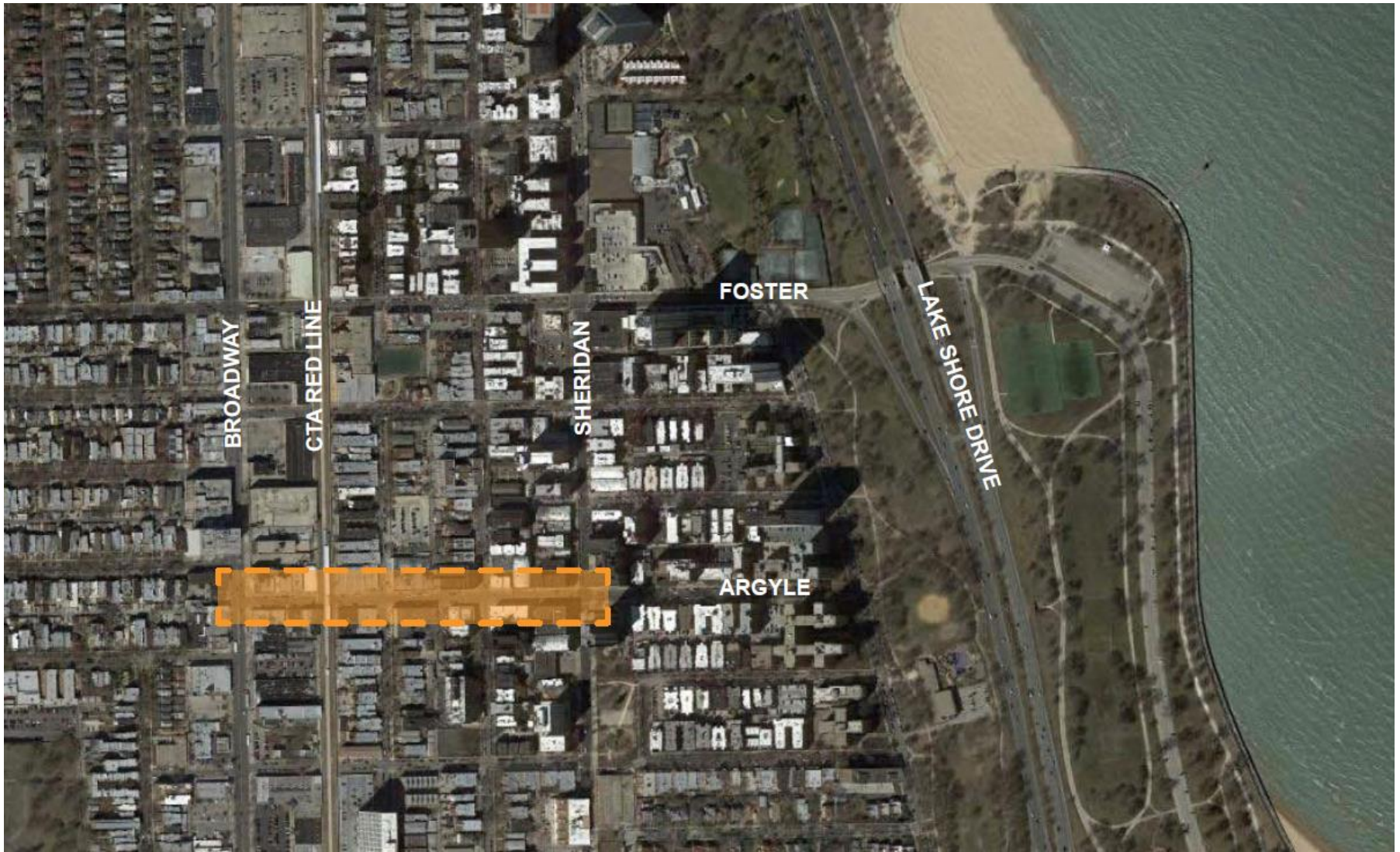
**Collaboration between CPS, MWRD, & DWM in partnership with
Openlands and Healthy Schools Campaign**



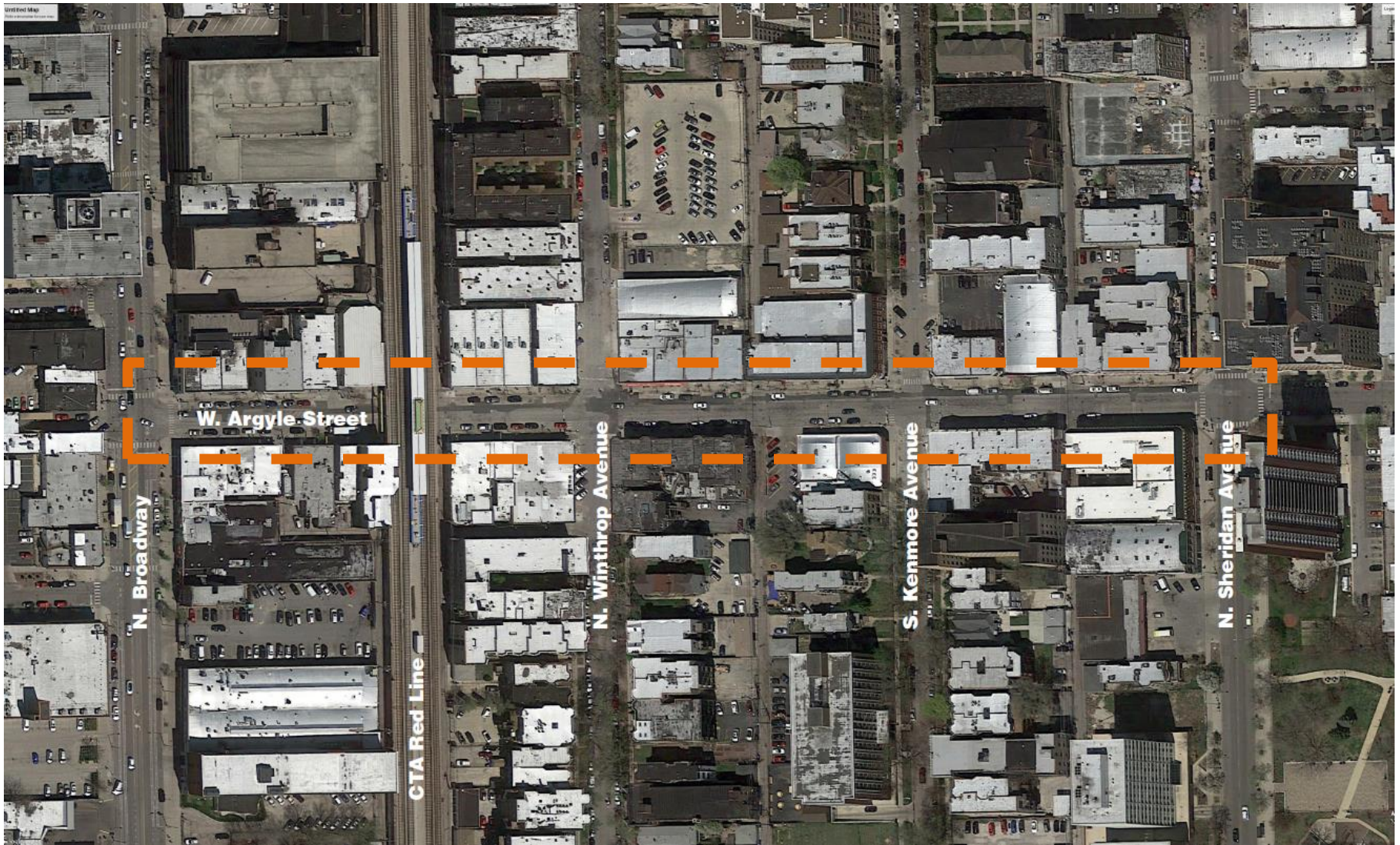
Grissom Elementary - After

Space to Grow Schoolyards

**Collaboration between CPS, MWRD, & DWM in partnership with
Openlands and Healthy Schools Campaign**



Argyle Sustainable Streetscape
Collaboration between CDOT and DWM



Argyle Sustainable Streetscape

Collaboration between CDOT and DWM

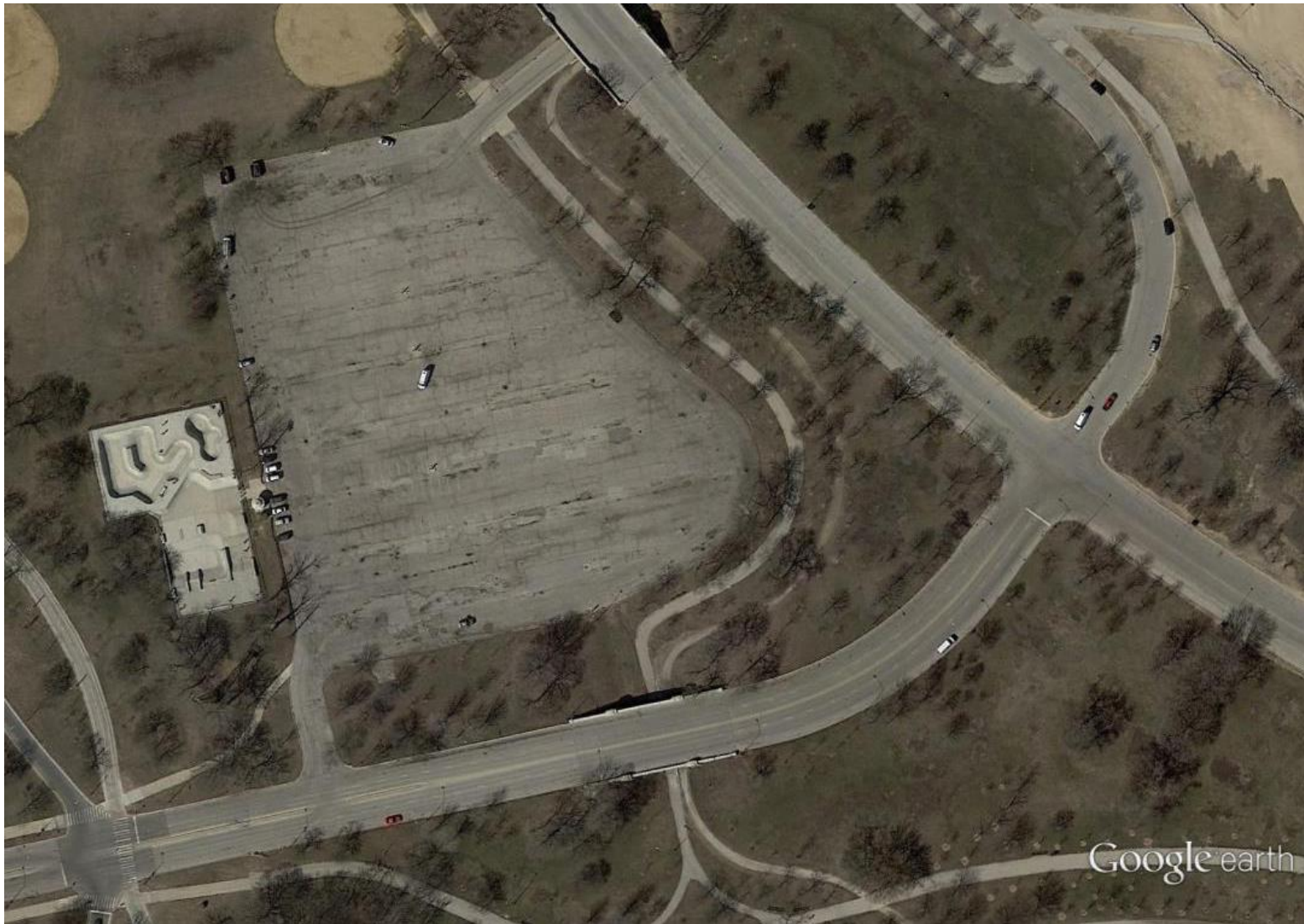


Argyle Sustainable Streetscape
Collaboration between CDOT and DWM



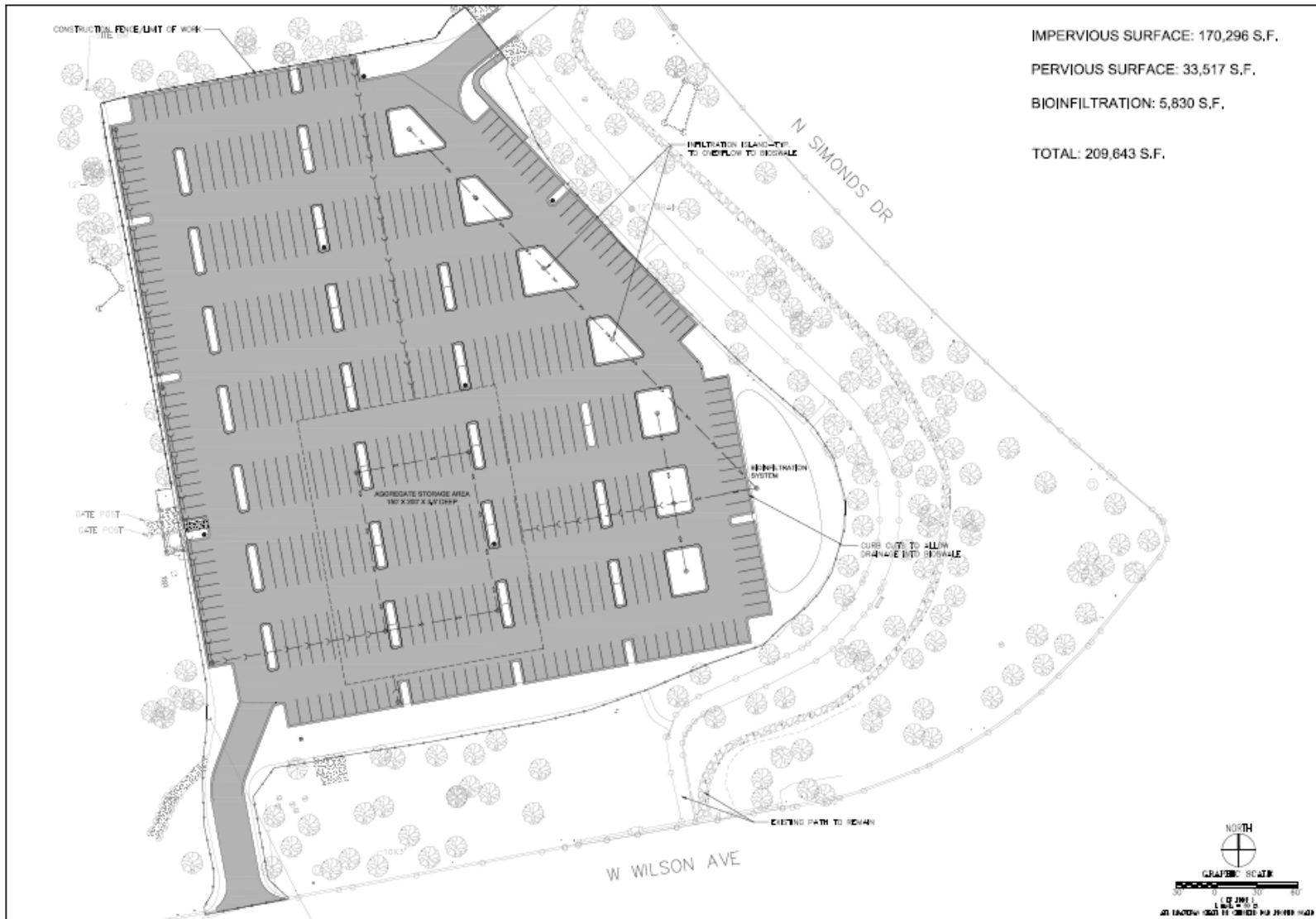
Wilson Avenue Parking Lot

Collaboration between CPD and DWM with additional funding from USEPA



Wilson Avenue Parking Lot

Collaboration between CPD and DWM with additional funding from USEPA



Wilson Avenue Parking Lot

Collaboration between CPD and DWM with additional funding from USEPA