

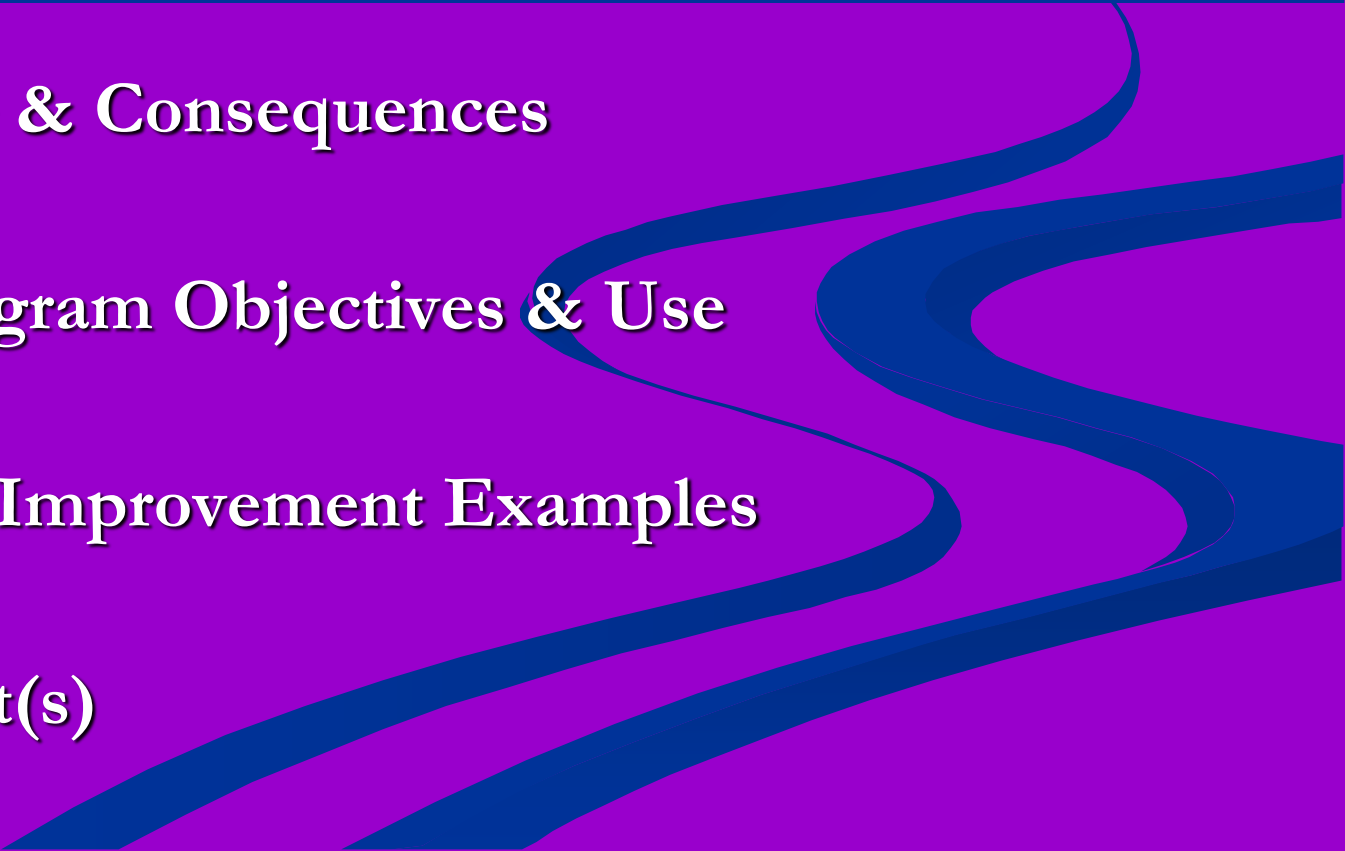


HOW FLOOD LOSS MITIGATION EFFORTS ARE IMPROVING THE QUALITY OF LIFE OF BIRMINGHAM'S FLOODPLAIN RESIDENTS

Edwin Revell, CFM

Denise Pruitt, CFM

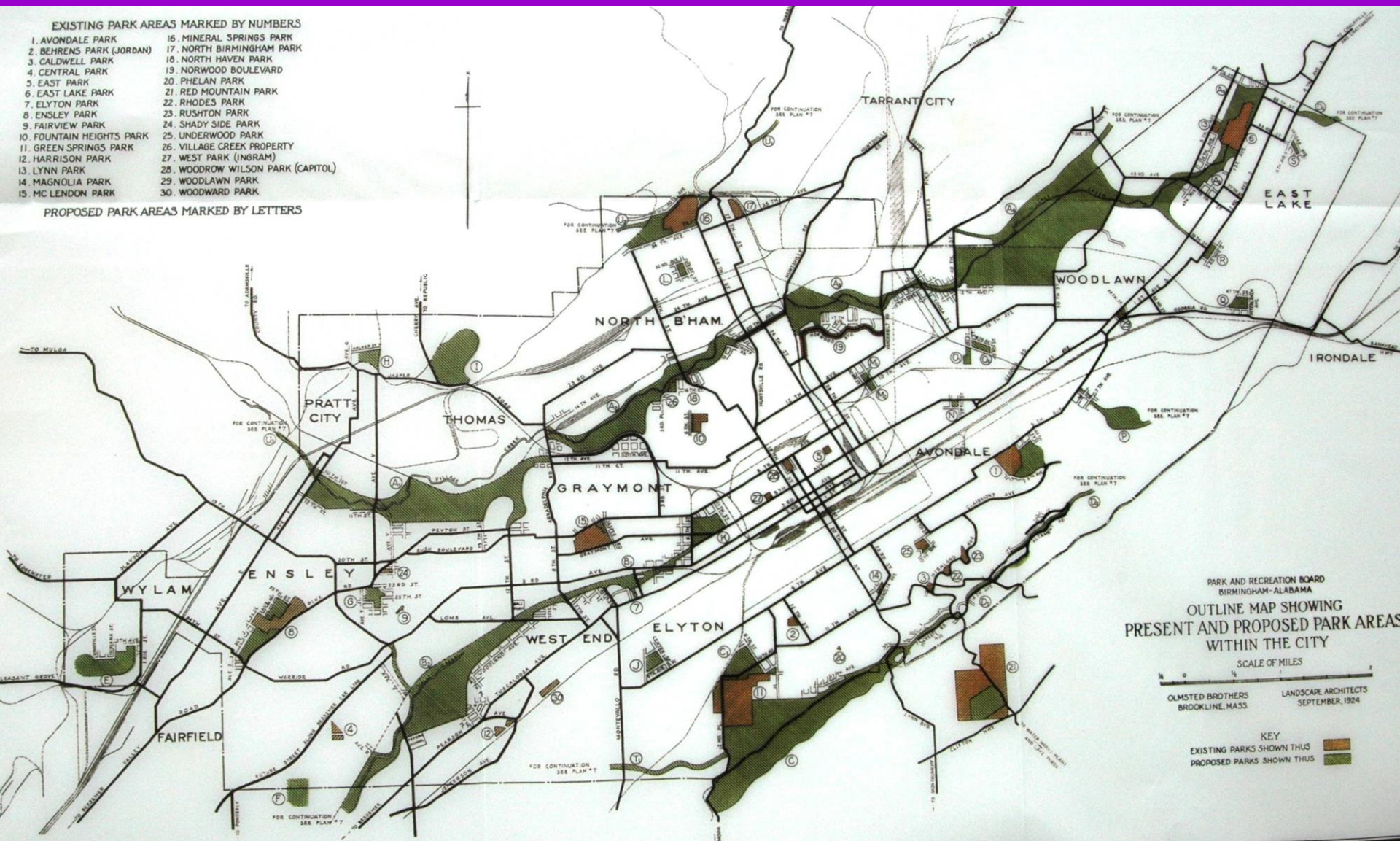
PRESENTATION OUTLINE

- Past Vision of Floodplain Use
 - Competing Visions & Interests
 - Decision Made & Consequences
 - Floodplain Program Objectives & Use
 - Quality of Life Improvement Examples
 - Final Comment(s)
- 

PAST VISION

- 1919 Manning Plan
- 1925 Olmsted Brothers Plan
- Increase park acreage from 700 to 3,500
- Protect critical water resource areas
- Build parkways along ridge tops
- Acquire floodplain lands for park purposes
- Provide storm water drainage channels & fields of recreation

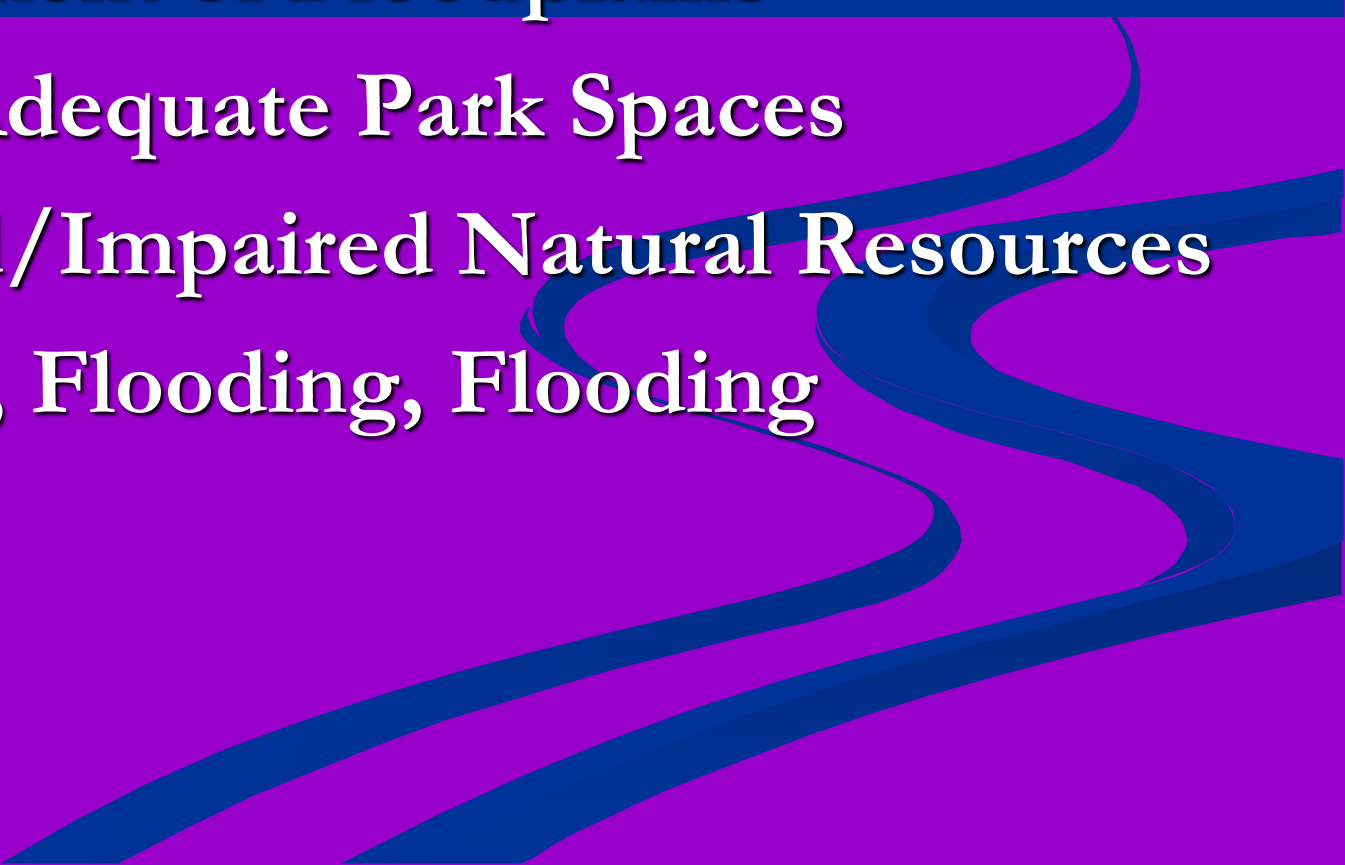
Olmsted Credo: “to conserve the scenery and the natural and historic objects and the wildlife therein and to provide for the enjoyment of the same in such manner and by such means as will leave them unimpaired for the enjoyment of future generations.”



COMPETING VISIONS & INTERESTS

- Economic (Industrial Boom)
 - Private Development
 - Social Interests (separate but equal)
 - Lack of Federal Funding
- 
- The background of the slide features a solid magenta color. On the right side, there are several thick, dark blue wavy lines that flow from the top right towards the bottom left, creating a sense of movement and depth.

Decision & Consequences

- Competing Interests Prevailed
 - Development of Floodplains
 - Lack of Adequate Park Spaces
 - Impacted/Impaired Natural Resources
 - Flooding, Flooding, Flooding
- 

CONSEQUENCES (CONT'D)

- ❑ 16 flood-related Presidential Declared Disasters since 1970
- ❑ Tens of millions in flood-related damages to structures
- ❑ 4,000 floodplain structures impacted



CONSEQUENCES (CONT'D)

OCTOBER 1995 FLOOD



CONSEQUENCES (CONT'D)

MAY 2003 FLOOD



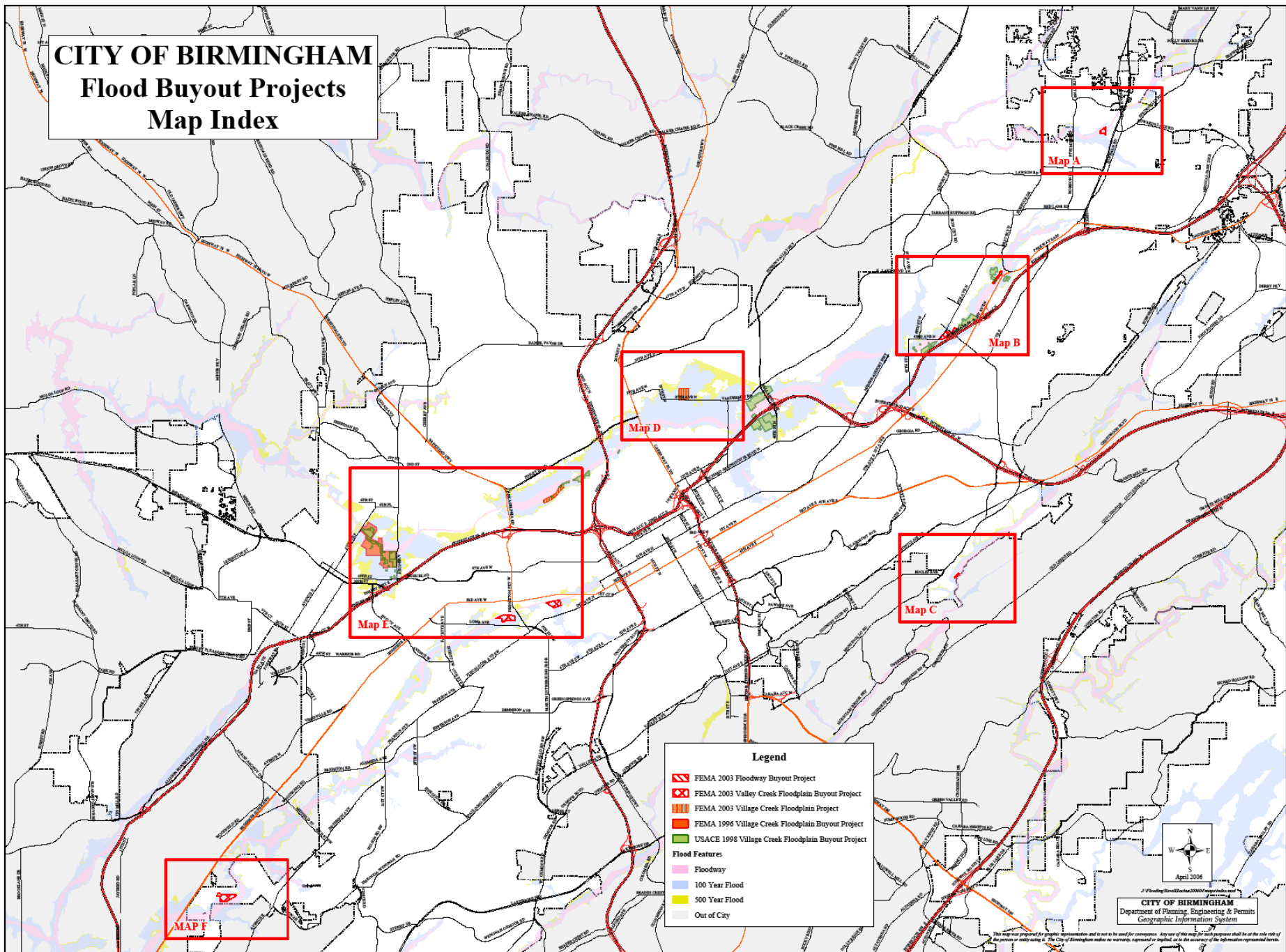
FLOODPLAIN PROGRAM OBJECTIVES & USE

- Acquire properties with most severe flooding
 - Reuse acquired lands as community assets & recreational spaces
 - Improve homeownership conditions & opportunities
 - Reduce flood loss costs
 - Enhance quality of life
- 
- A decorative graphic consisting of several thick, dark blue wavy lines that flow from the right side of the slide towards the bottom left, set against a magenta background.

CITY OF BIRMINGHAM

Flood Buyout Projects

Map Index



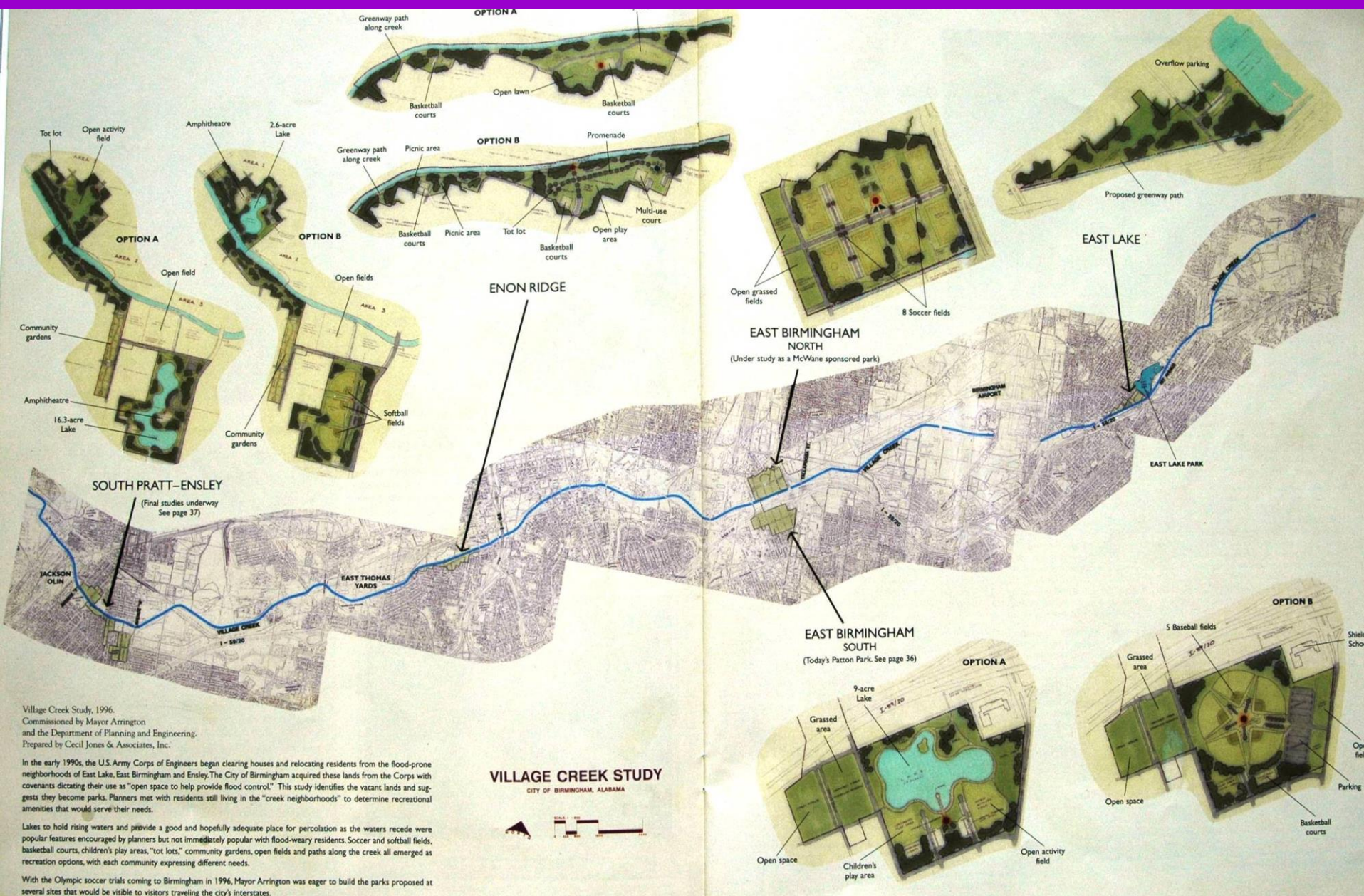
FLOOD BUYOUTS (1988-2007)

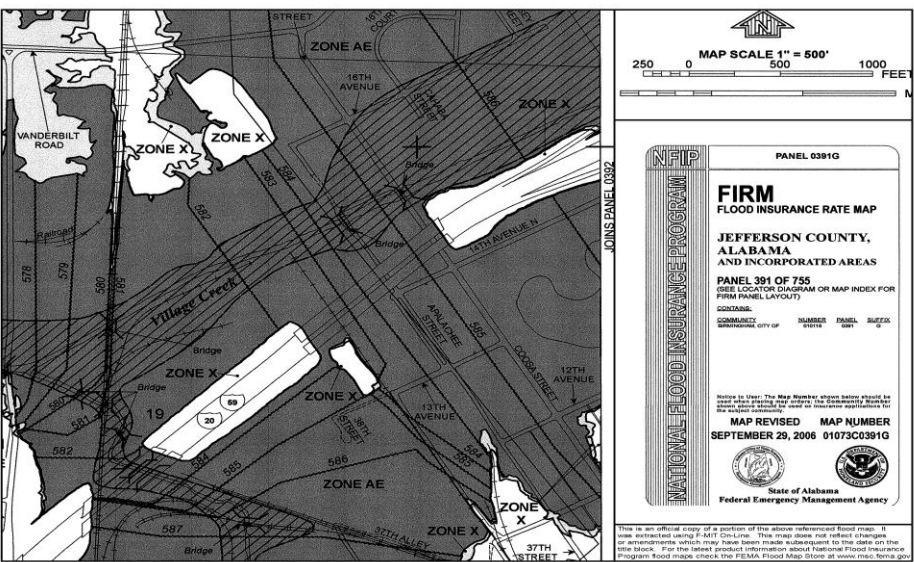
- USACE BUYOUTS 1988-1992 (~800 PROPERTIES)
- FEMA HMGP BUYOUTS 1996-2000 (255 PROPERTIES)
- FEMA FMA BUYOUTS 2001-2004 (10 PROPERTIES)
- FEMA PDM BUYOUTS 2003 (108 PROPERTIES)
- FEMA HMGP FLOODWAY BUYOUTS 2003 (33 PROPERTIES)
- FEMA PDM BUYOUTS 2005 (108 PROPERTIES)
- FEMA HMGP BUYOUTS 2005 (37 PROPERTIES)
- FEMA PDM BUYOUTS 2007 (21 PROPERTIES)

FLOOD BUYOUTS CONT'D (1998-2007)

- **ACQUIRED OVER 1200 FLOODPLAIN PROPERTIES TO DATE**
- **SPENT OVER \$50 MILLION IN PROPERTY BUYOUTS TO DATE**

COMMUNITY ASSETS

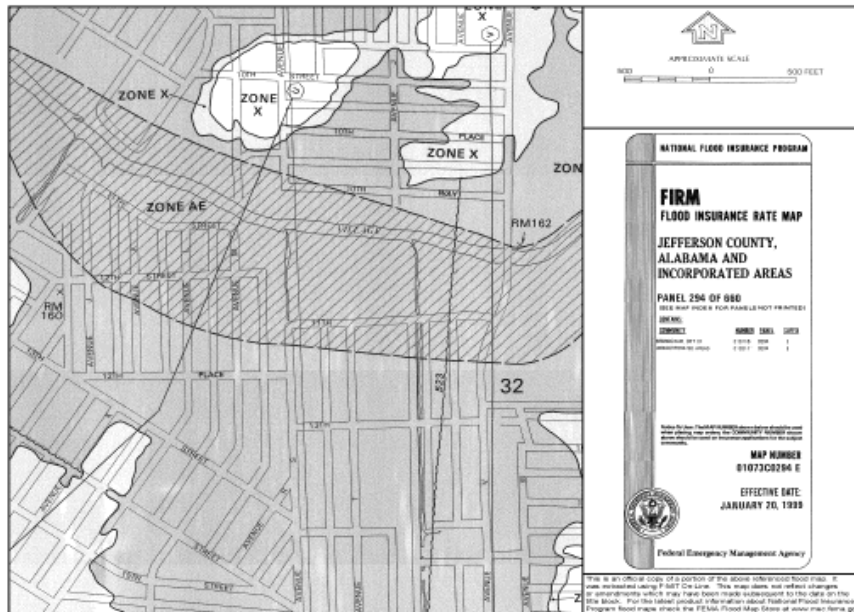
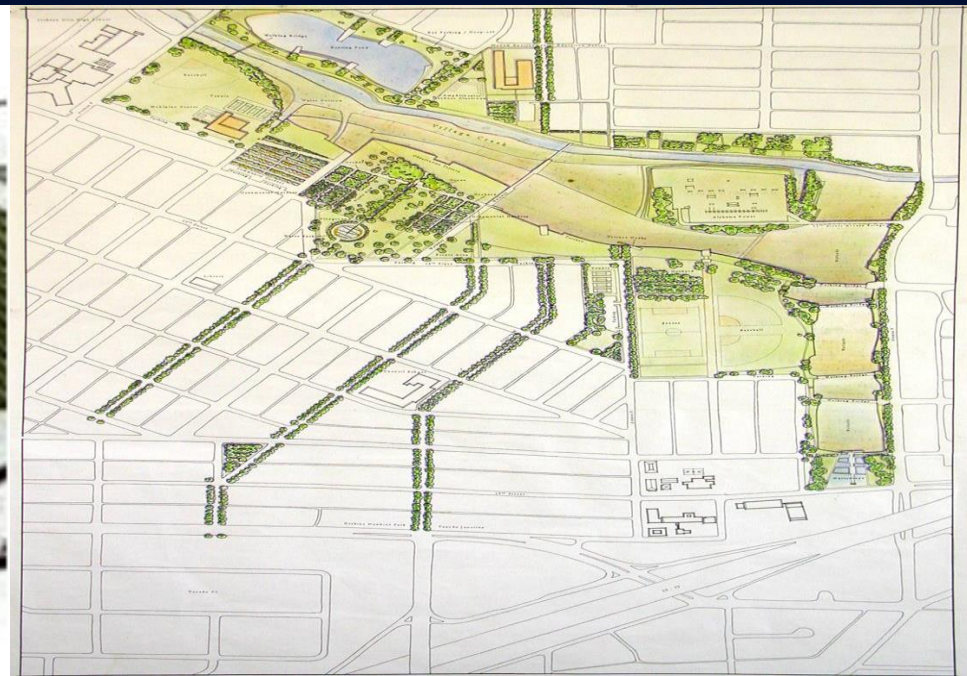




W.C. PATTON PARK



PENDING REALITY



Quality of Life Improvement Examples



Quality of Life Improvement Examples



Quality of Life Improvement Examples



Quality of Life Improvement Examples



Olmsted Quote

“In some cases other and perhaps equally good opportunities may be found later in case the present opportunities are lost; but as a rule *the chance once gone is gone forever, and the burden of the loss— less park service, more costly park service, or a service of inferior quality—must be borne not alone by your present citizens but by the citizens of your great city in perpetuity.*”

QUESTIONS/COMMENTS

- ❖ **Edwin Revell, Flood Plain Administrator**
edwin.revell@birminghamal.gov
205-254-2479
- ❖ **Denise Pruitt, Project Planner**
denise.pruitt@birminghamal.gov
205-254-2479

www.birminghamal.gov